

Visual Story for Confederation Centre of the Arts



Charlottetown, Prince Edward Island

Table of Contents

Page 3 – Info about Confederation Centre of the Arts

Page 4—Getting in the building – Queen Street

Page 8 - Getting in the building – Richmond Street

Page 16 – Useful information on the day of the performance

Page 18 – Washrooms

Page 22 – Inside the Theatre

This visual story is designed for visitors and their friends attending a performance at Confederation Centre of the Arts. The visual story will help prepare you if you are curious or anxious about your visit.

Would you like a visit to familiarize yourself with the building?

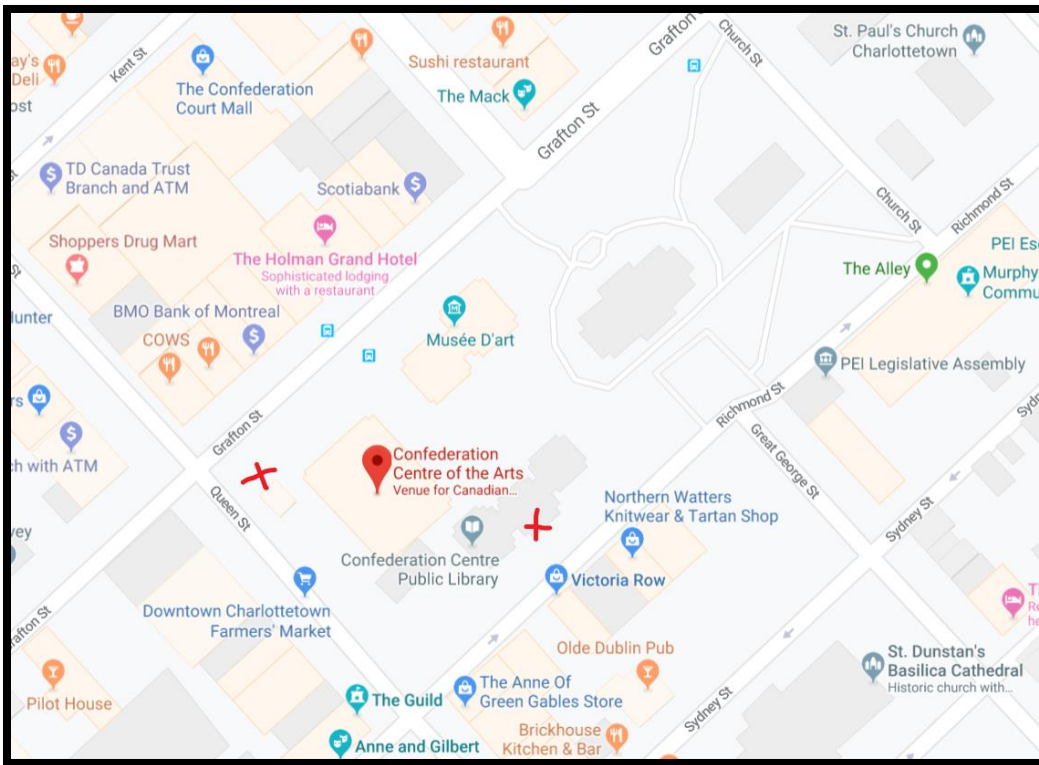
If you would like to come to Confederation Centre and look around the building and visit the theatre,

please call Sarah at: 902-629-1175

Information about Confederation Centre

Where is Confederation Centre?

The address is 130 Queen Street, Charlottetown, Prince Edward Island



There are two entrances into Confederation Centre. Both are labelled with a red 'X' on the map.

Getting inside the building

There are 2 main entrances into Confederation Centre of the Arts.

One is on Queen Street and one on Richmond Street.

We will show you how to get to the theatre from both entrances.

Queen Street

This entrance is on the corner of Queen and Grafton streets.

This is a good place to get dropped off by a driver or taxi.

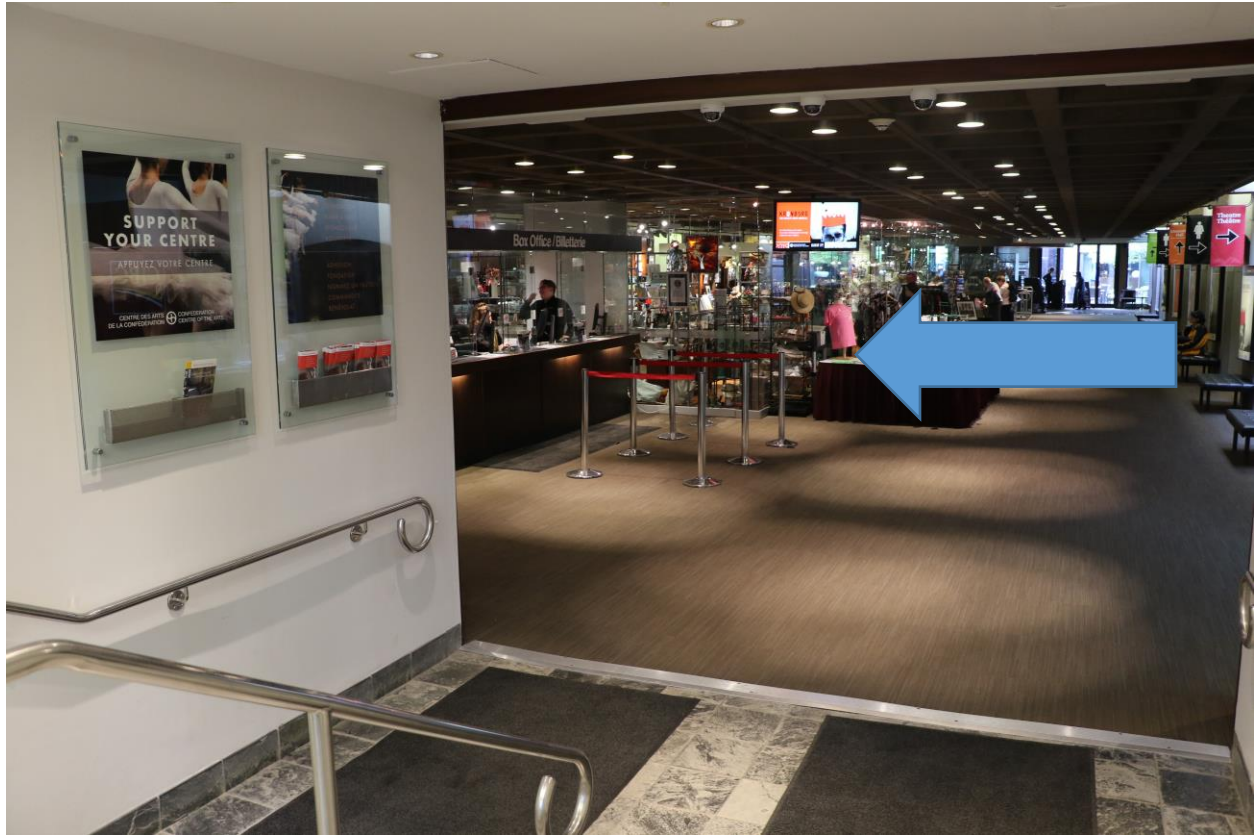
This is also where your driver or taxi would pick you up after the

performance.



The stairs to get in are underneath the big electronic sign and they are painted red down the middle.

Enter through the glass doors and you are in the lobby with the Box Office in front of you and to the left.



The Box Office is where you can buy tickets or where you pick them up if you have already ordered them.

Accessibility

Confederation Centre is wheelchair accessible at the Queen Street entrance.



There is an elevator available that can take you down to the theatre lobby level.



When you come out of the elevator, walk straight down this hall until you are on the carpet and turn left.

The Box Office is now in front of you.



Getting in the building-Door 2

Richmond Street Entrance

There is also an entrance on Richmond Street, between Queen Street and Great George Streets.

Cars are not allowed on this part of Richmond Street. There are gates across the street to stop vehicles from driving on the road.



This street is also called Victoria Row.

To use this entrance, your driver would leave you at the corner of Queen Street and Richmond Street or Great George Street and Richmond Street.



It says Stage Door Entrance, but it is an entrance for everyone, not only those who are working on the stage.



Accessibility

Confederation Centre is wheelchair accessible at the Richmond Street entrance. There is a service lift available that can take you down to the theatre lobby level.





Getting to the Lobby

From the Richmond Street Entrance, you will need to walk down the hall to get to the theatre lobby.

If you need help or directions at this entrance, look for the Commissionaire at their desk.

Getting to the Lobby for Relaxed Performances

You will see a double blue circle with the word RELAX at this entrance. Follow these circles towards the theatre lobby.





Keep moving straight down the hallway...

... past the sculpture of the Moose on your right.





At the far end you will see a restaurant called MAVOR's. The sign is near the ceiling.

Turn left when you get here to the carpeted area and you are in the theatre lobby.

To get to the Box Office to pick up or buy tickets, walk straight through the lobby, past the gift shop on your right



Box Office

This is the box office, where people line up to pick up their tickets. When you come, it might be full of people or it might be empty.



Useful Information in the Theatre Lobby

What is an usher?

An usher works with the Theatre and helps people going to the theatre (like you!) to find their seats and anything else they are looking for. You can ask them any questions you have



Bar and Canteen areas

This is the bar area where you can buy snacks or drinks. You can pay with cash only.



The Gift Shop

There is a gift shop called The Showcase where you can buy books, music, jewellery, crafts and art.



There is also sometime an extra shop with books, clothing, music and other items you can buy about the specific show you are coming to see. They can accept CASH or DEBIT.

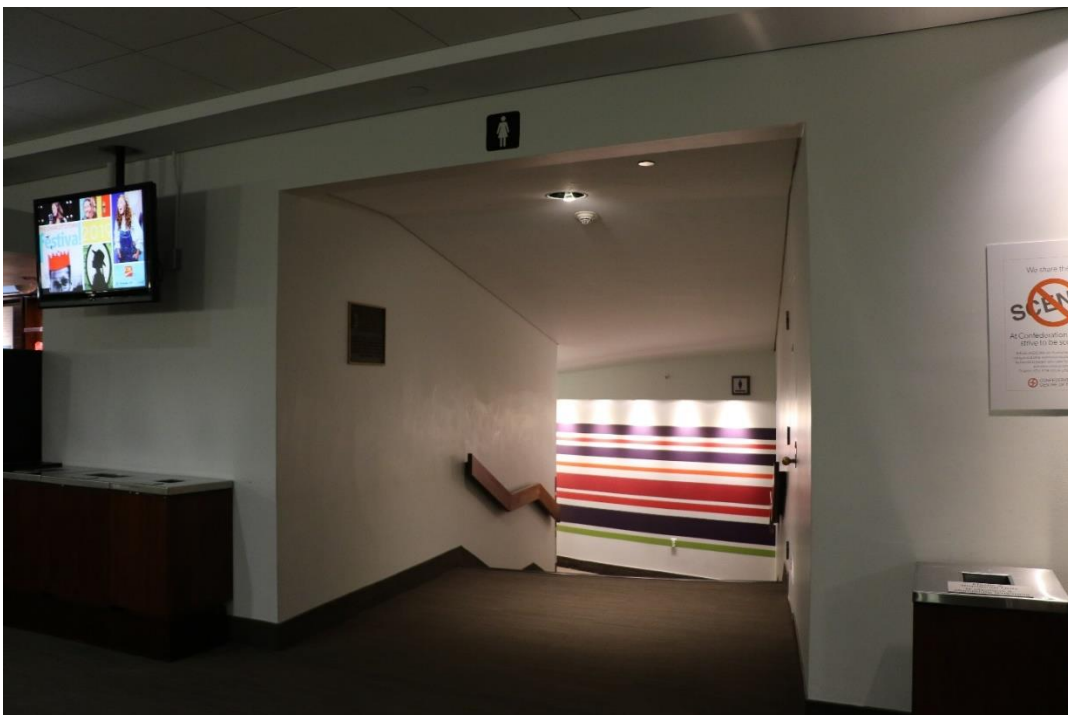


Washrooms

If you need help finding the washrooms, ask the **ushers**.



They are on either side of the concession stand.



Accessible Washroom



This is an accessible washroom-it is to the left of the concession stand.

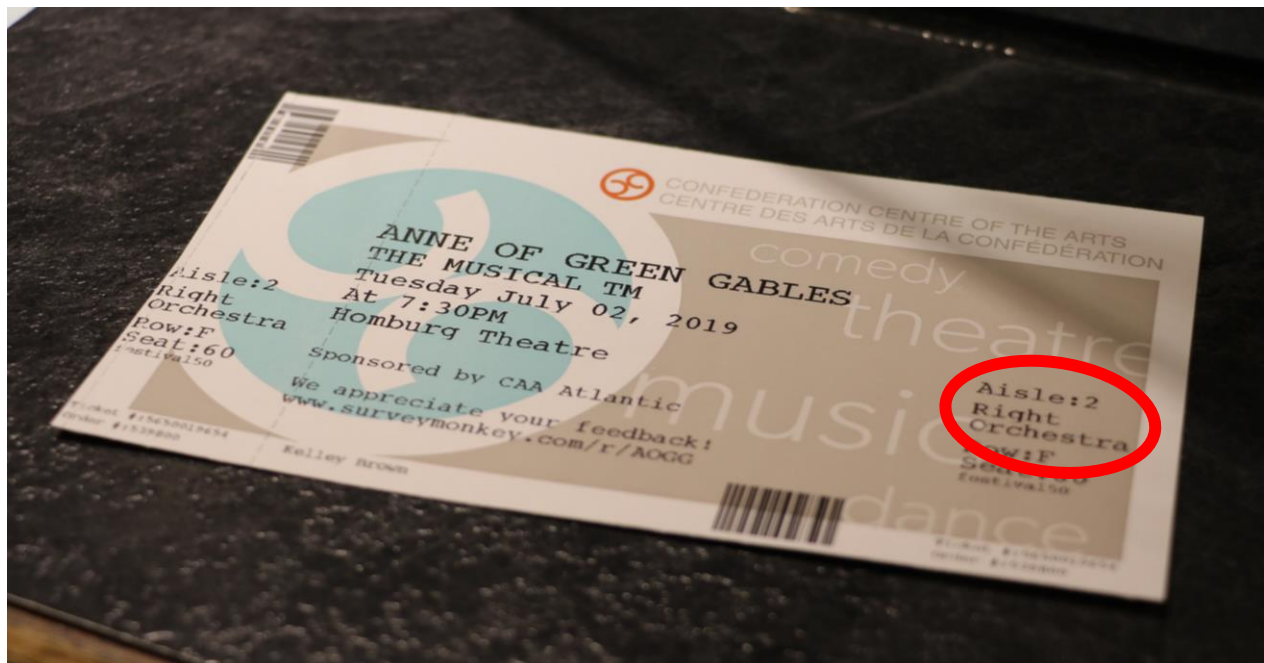
Ask an usher if you need some help.

The Theatre



These are stairs into the Homburg Theatre. The ushers at the bottom of the stairs will check your ticket before you go in.

On your ticket it will tell you which staircase to go to:



Using the Elevator to go into the theatre

If you need to use the elevator to enter the theatre, it is found between the Women's washroom and the stairs at Aisle 2&4.



If you need any help or would like to ask a question, please feel free to speak to any usher who will be happy to help you.

Inside the Theatre

When you enter the theatre there will be ushers there to give you a programme like this:



They will also help you find your seat by looking at your ticket.



You will walk down the aisle and look for your row letter. You can find it on the seats here



Your seat number is here on each seat

Some seats may also have special names on them.



These can be because someone has donated money to name the seat in honour of someone that is important to them.

You are allowed to sit there even if it is not your name.

Waiting for the Performance

Once you are sat down, you can look around the theatre. You will see more people getting to their seats, lights above your head, and maybe some in the walls too



It could get a little noisy as everyone is trying to find their seats and are saying hello to people they meet in the theatre.



When the show is about to start, the lights above your head may be turned down lower and a person will come out onto the stage to welcome you to Confederation Centre.

They will tell you some important information and then you will watch and enjoy the performance!



INTERMISSION

Many performances have an intermission. This is a 20 minute break where you can leave your seat and go to the Lobby.

You can go to the washroom, buy a snack or a drink or look in the gift shop. Or you can just walk around to stretch your legs.



When the performance is almost ready to start again, the overhead lights in the lobby will flash off and on.

This is a sign to go back to your seat.

You do not need to have your ticket checked again. If you need help, please ask an Usher. They are always happy to help you!

End of the Show

When the performance is over some people may clap to show that they liked what they saw and heard. They may clap louder or shout when a favourite actor comes out to bow.

After all the actors have left the stage, the curtain comes down and the lights will come on brighter again.

Everyone will stand up and start to leave the theatre. Many of them will be talking about the show and it can be noisy.

You can leave the theatre the same way you came in and head into the theatre lobby and then out of the building.

We hope you have a wonderful experience
at the Confederation Centre of the Arts!

For questions or feedback, please contact
Sarah Denman-Wood sdw@confederationcentre.com
902.629.1175 or the Box Office at 1.800.565.0278

CENTRE DES ARTS
DE LA CONFÉDÉRATION  CONFEDERATION
CENTRE OF THE ARTS